

SRS of n=50 adults from nhanes 2013/2014**The SURVEYSELECT Procedure**

Selection Method	Simple Random Sampling
-------------------------	------------------------

Input Data Set	NHANES2
Random Number Seed	123456
Sample Size	50
Selection Probability	0.008948
Sampling Weight	111.76
Output Data Set	NHANES2SRS1

SRS of n=50 adults from nhanes 2013/2014

Obs	sex	age	weight	height	bmi	waist	agegroup
1	male	48	285.34	70.1181	40.9	48.8976	adult
2	female	80	172.48	63.5433	30.1	41.6535	adult
3	male	48	186.78	69.8819	26.9	37.5197	adult
4	male	80	167.20	67.5591	25.8	37.0079	adult
5	female	20	156.20	67.7953	23.9	32.2835	adult
6	female	43	196.02	66.1811	31.5	46.8504	adult
7	male	54	200.86	64.8425	33.7	42.5197	adult
8	female	24	153.78	63.4252	26.9	40.7874	adult
9	female	25	122.32	64.1732	20.9	29.0945	adult
10	male	58	142.34	69.0157	21.1	34.2520	adult
11	female	74	154.22	63.1496	27.2	37.8346	adult
12	female	74	173.80	61.3780	32.5	45.3937	adult
13	male	78	154.22	67.4016	23.9	33.4646	adult
14	female	72	89.10	56.9291	19.4	29.1339	adult
15	male	48	178.20	72.2835	24.0	36.8110	adult
16	male	64	231.66	62.8740	41.3	51.7323	adult
17	male	41	164.34	68.0315	25.0	36.7717	adult
18	female	39	143.88	60.7874	27.4	33.7402	adult
19	male	49	305.14	72.1654	41.3	.	adult
20	male	73	141.24	70.3937	20.1	37.4409	adult
21	female	67	203.94	62.0079	37.4	44.7244	adult
22	female	26	101.86	59.8031	20.1	29.0157	adult
23	female	73	150.70	65.7087	24.6	38.1890	adult
24	male	60	199.32	72.1654	27.0	40.0394	adult
25	male	40	206.58	67.4409	32.0	43.2677	adult
26	male	27	181.94	67.3622	28.2	38.6220	adult
27	male	62	199.98	67.3622	31.1	43.3858	adult
28	female	71	176.66	64.6063	29.8	42.9134	adult
29	female	80	166.10	62.3228	30.1	39.3701	adult
30	male	39	280.72	71.9291	38.2	52.0472	adult
31	female	48	127.60	61.4173	23.8	31.2598	adult
32	male	46	156.64	67.7953	24.0	.	adult
33	female	80	147.40	61.3386	27.6	40.7087	adult
34	female	35	183.04	65.2362	30.3	41.2205	adult
35	female	57	140.36	62.2047	25.6	34.9213	adult
36	female	40	170.06	65.9055	27.6	35.7480	adult
37	female	56	182.60	59.6850	36.1	39.4882	adult

SRS of n=50 adults from nhanes 2013/2014

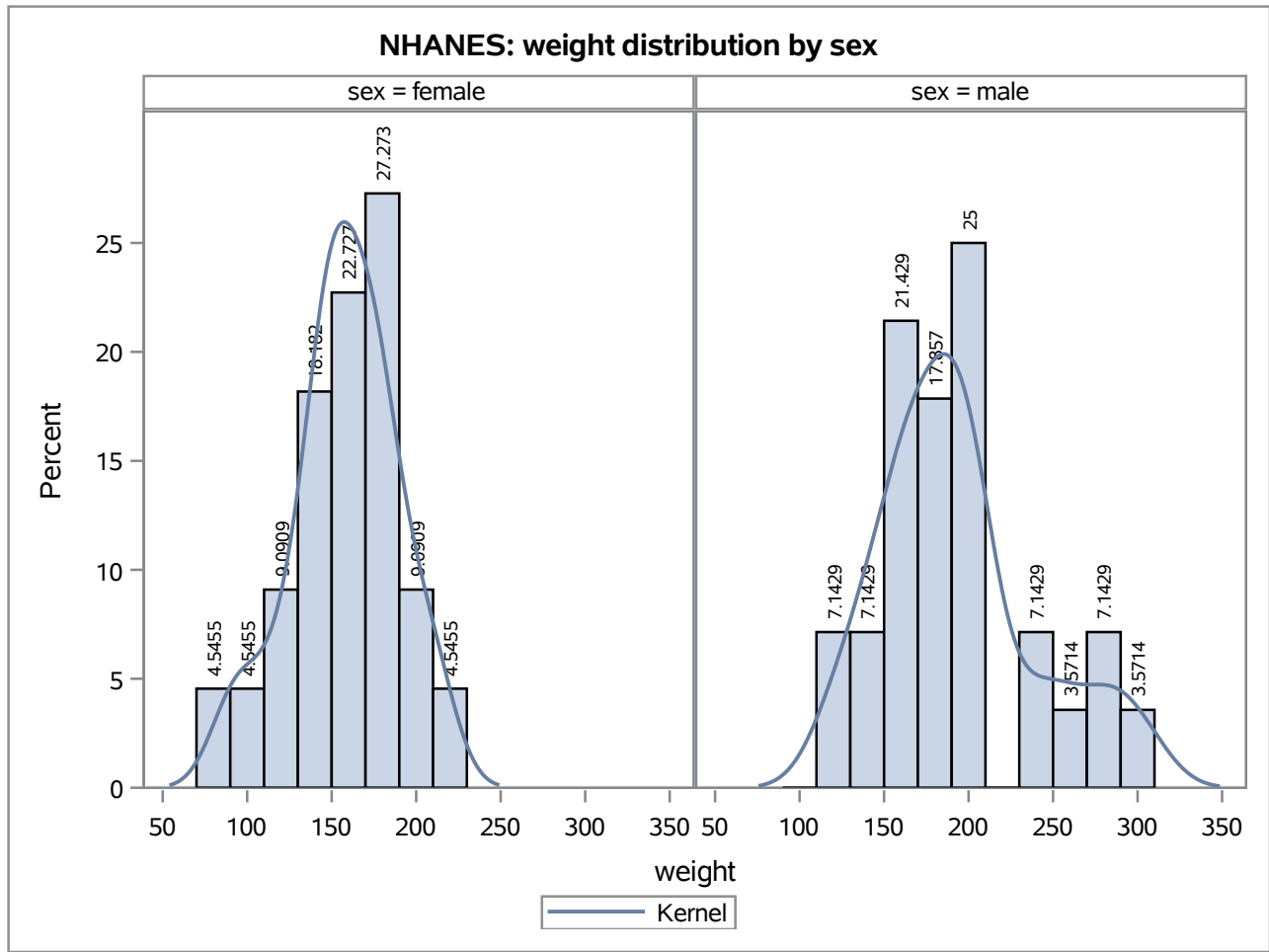
Obs	sex	age	weight	height	bmi	waist	agegroup
38	male	34	192.50	70.3937	27.4	37.9921	adult
39	male	75	163.90	64.7244	27.6	48.8189	adult
40	female	76	147.84	60.4724	28.5	36.6535	adult
41	male	57	254.32	70.7087	35.8	43.8189	adult
42	male	77	187.22	69.2126	27.5	40.1181	adult
43	male	45	179.30	70.7087	25.3	36.5354	adult
44	male	48	249.48	67.1260	39.0	51.0630	adult
45	female	47	214.06	64.6457	36.1	42.5984	adult
46	male	72	205.26	70.3543	29.2	42.8346	adult
47	male	80	127.38	66.4567	20.3	.	adult
48	male	24	199.32	71.2205	27.7	40.6299	adult
49	male	80	162.80	66.7323	25.8	39.4094	adult
50	male	21	119.24	66.6929	18.9	26.3386	adult

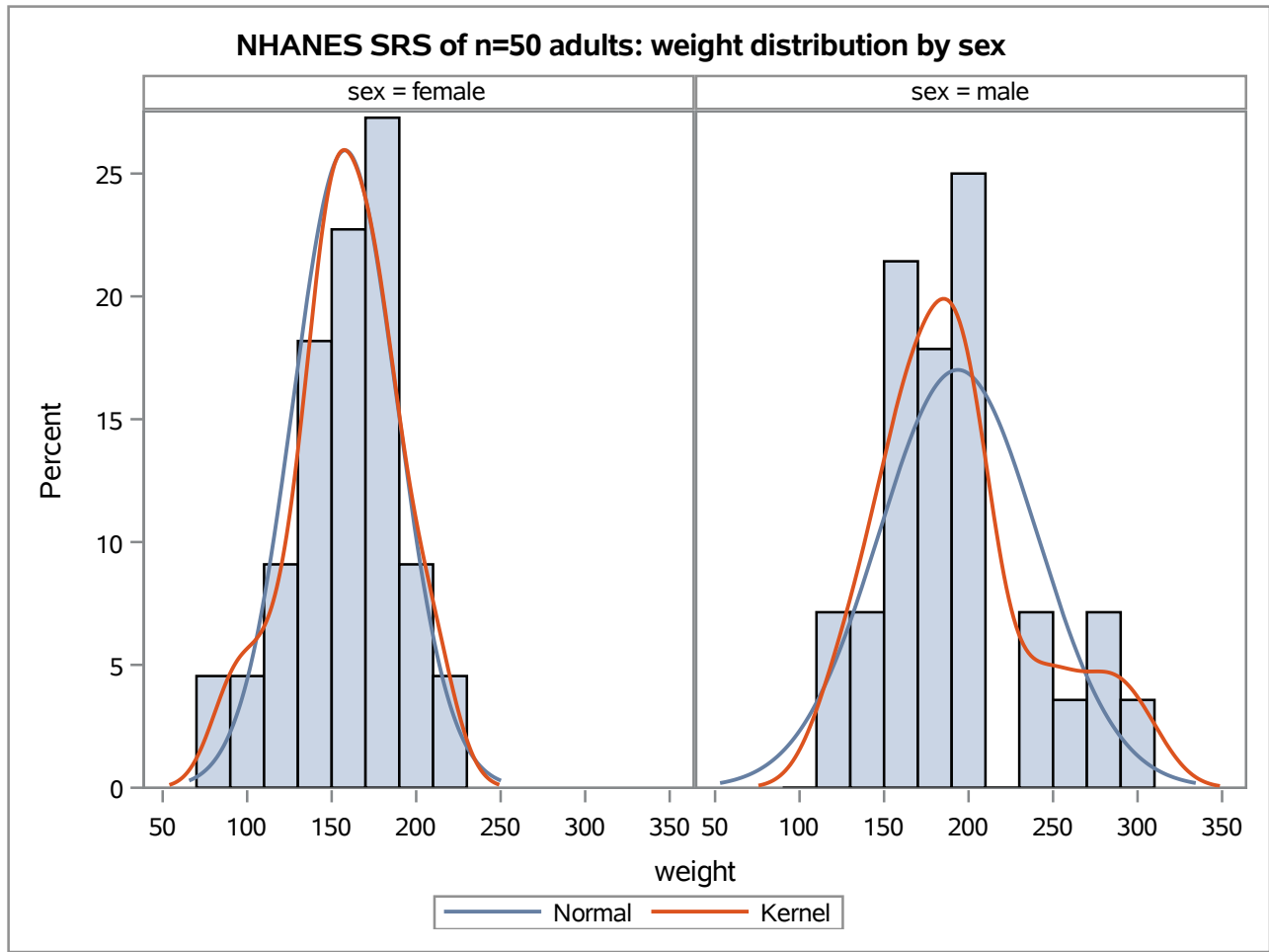
The MEANS Procedure

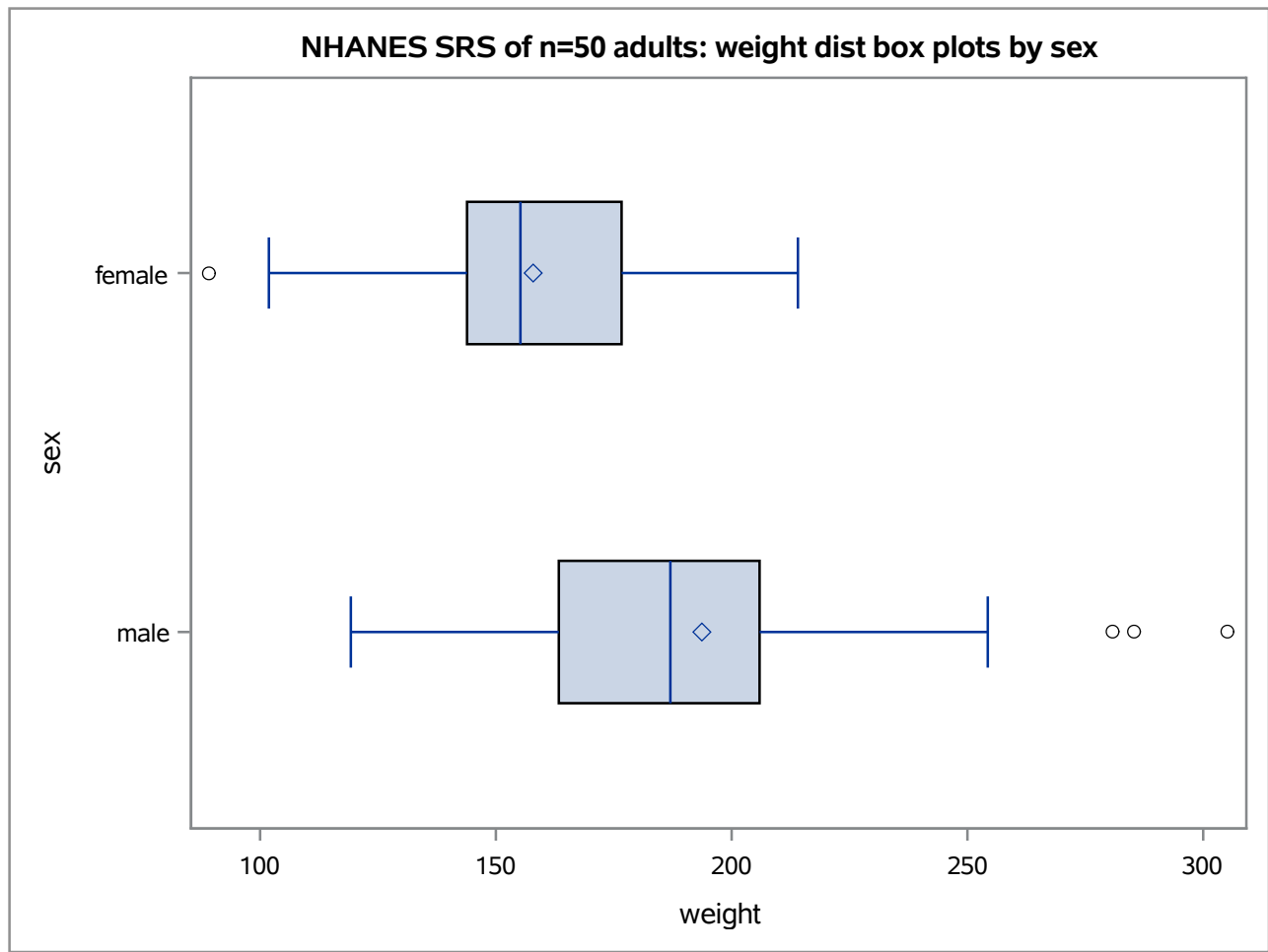
Variable	N	Mean	Std Dev	Minimum	Maximum
age	5588	49.1510379	17.5066150	20.0000000	80.0000000
weight	5533	179.2171372	48.6428635	71.0600000	489.7200000
height	5530	65.7703130	4.0196396	53.3070866	79.7637795
bmi	5520	29.1027536	7.1534775	14.1000000	82.9000000
waist	5270	39.0497542	6.5256869	21.8503937	70.0393701

SRS of n=50 adults from nhanes2013/2014**The MEANS Procedure**

Variable	N	Mean	Std Dev	Minimum	Maximum
age	50	54.7000000	18.9620997	20.0000000	80.0000000
weight	50	177.9448000	44.0426405	89.1000000	305.1400000
height	50	66.1133858	3.8371643	56.9291339	72.2834646
bmi	50	28.5280000	5.8770408	18.9000000	41.3000000
waist	47	39.4664098	5.9683398	26.3385827	52.0472441







NHANES SRS of n=50 adults: weight distributions by sex

The UNIVARIATE Procedure
 Variable: weight
 sex = female

Basic Statistical Measures			
Location		Variability	
Mean	157.9100	Std Deviation	30.75259
Median	155.2100	Variance	945.72186
Mode	.	Range	124.96000
		Interquartile Range	32.78000

Quantiles (Definition 5)	
Level	Quantile
100% Max	214.06
99%	214.06
95%	203.94
90%	196.02
75% Q3	176.66
50% Median	155.21
25% Q1	143.88
10%	122.32
5%	101.86
1%	89.10
0% Min	89.10

Extreme Values			
Lowest		Highest	
Order	Value	Order	Value
1	89.10	18	182.60
2	101.86	19	183.04
3	122.32	20	196.02
4	127.60	21	203.94
5	140.36	22	214.06

NHANES SRS of n=50 adults: weight distributions by sex

The UNIVARIATE Procedure
 Variable: weight
 sex = male

Basic Statistical Measures			
Location		Variability	
Mean	193.6864	Std Deviation	46.91157
Median	187.0000	Variance	2201
Mode	199.3200	Range	185.90000
		Interquartile Range	42.57000

Quantiles (Definition 5)	
Level	Quantile
100% Max	305.14
99%	305.14
95%	285.34
90%	280.72
75% Q3	205.92
50% Median	187.00
25% Q1	163.35
10%	141.24
5%	127.38
1%	119.24
0% Min	119.24

Extreme Values					
Lowest			Highest		
Order	Value	Freq	Order	Value	Freq
1	119.24	1	23	249.48	1
2	127.38	1	24	254.32	1
3	141.24	1	25	280.72	1
4	142.34	1	26	285.34	1
5	154.22	1	27	305.14	1

NHANES SRS of n=50 adults: weight distributions by sex**The MEANS Procedure**

Analysis Variable : weight											
sex	N Obs	N	Minimum	Lower Quartile	Median	Upper Quartile	Maximum	Range	Quartile Range	Mean	Std Dev
female	2919	2888	71.0600	134.6400	158.6200	192.9400	443.5200	372.4600	58.3000	168.2295	47.6999
male	2669	2645	72.1600	159.2800	183.2600	213.4000	489.7200	417.5600	54.1200	191.2143	46.8013

NHANES SRS of n=50 adults: weight distributions by sex

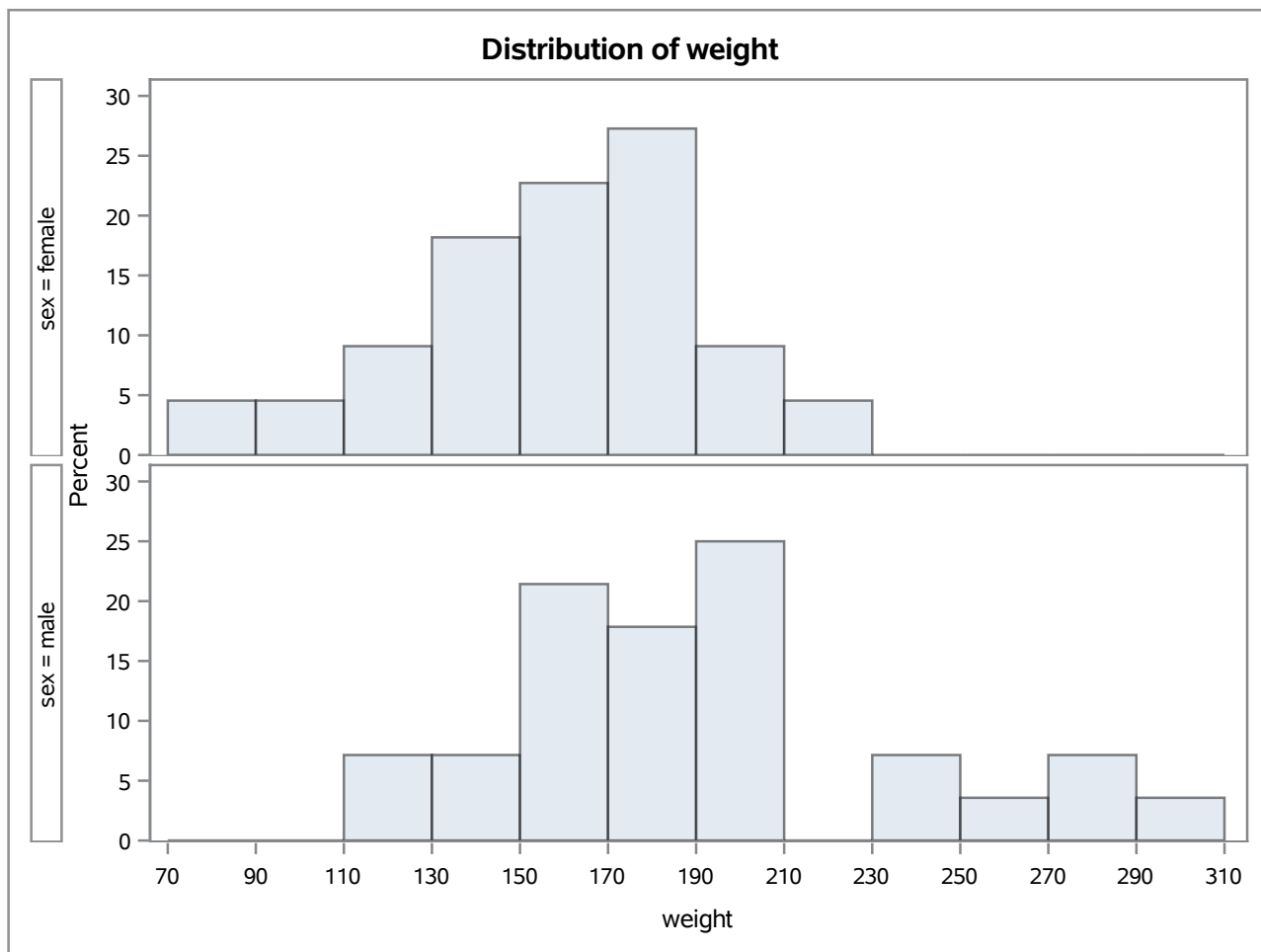
The MEANS Procedure

Analysis Variable : weight													
sex	N Obs	1st Pctl	5th Pctl	10th Pctl	20th Pctl	30th Pctl	40th Pctl	50th Pctl	60th Pctl	70th Pctl	80th Pctl	90th Pctl	95th Pctl
female	22	89.1000	101.8600	122.3200	140.3600	147.4000	150.7000	155.2100	170.0600	173.8000	182.6000	196.0200	203.9400
male	28	119.2400	127.3800	141.2400	156.6400	164.3400	179.3000	187.0000	199.3200	200.8600	231.6600	280.7200	285.3400

Analysis Variable : weight		
sex	N Obs	99th Pctl
female	22	214.0600
male	28	305.1400

NHANES SRS of n=50 adults: weight distributions by sex
 NHANES SRS of n=50 adults: histograms and relative frequency distributions

The UNIVARIATE Procedure



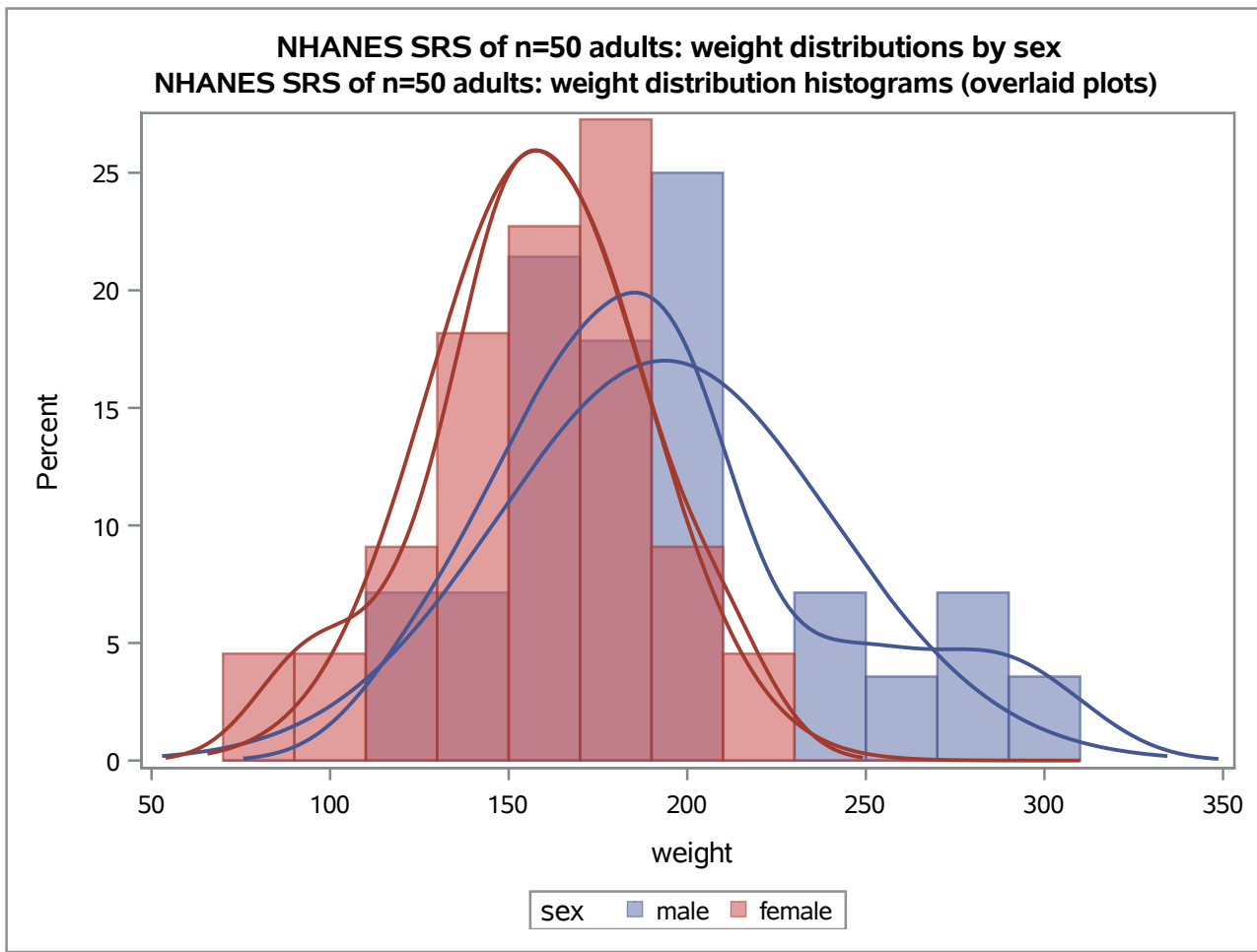
NHANES SRS of n=50 adults: weight distributions by sex
NHANES SRS of n=50 adults: histograms and relative frequency distributions

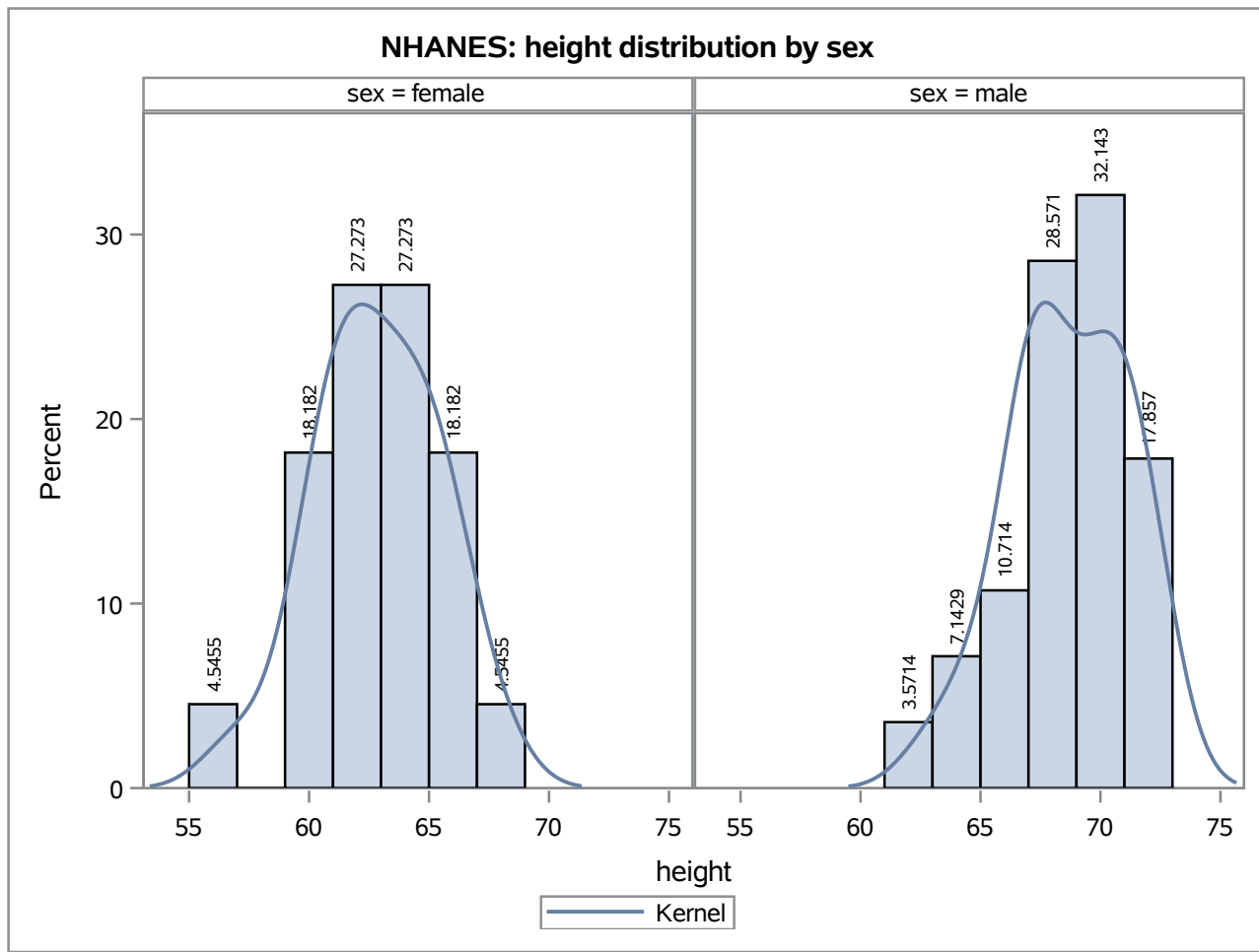
sex=female

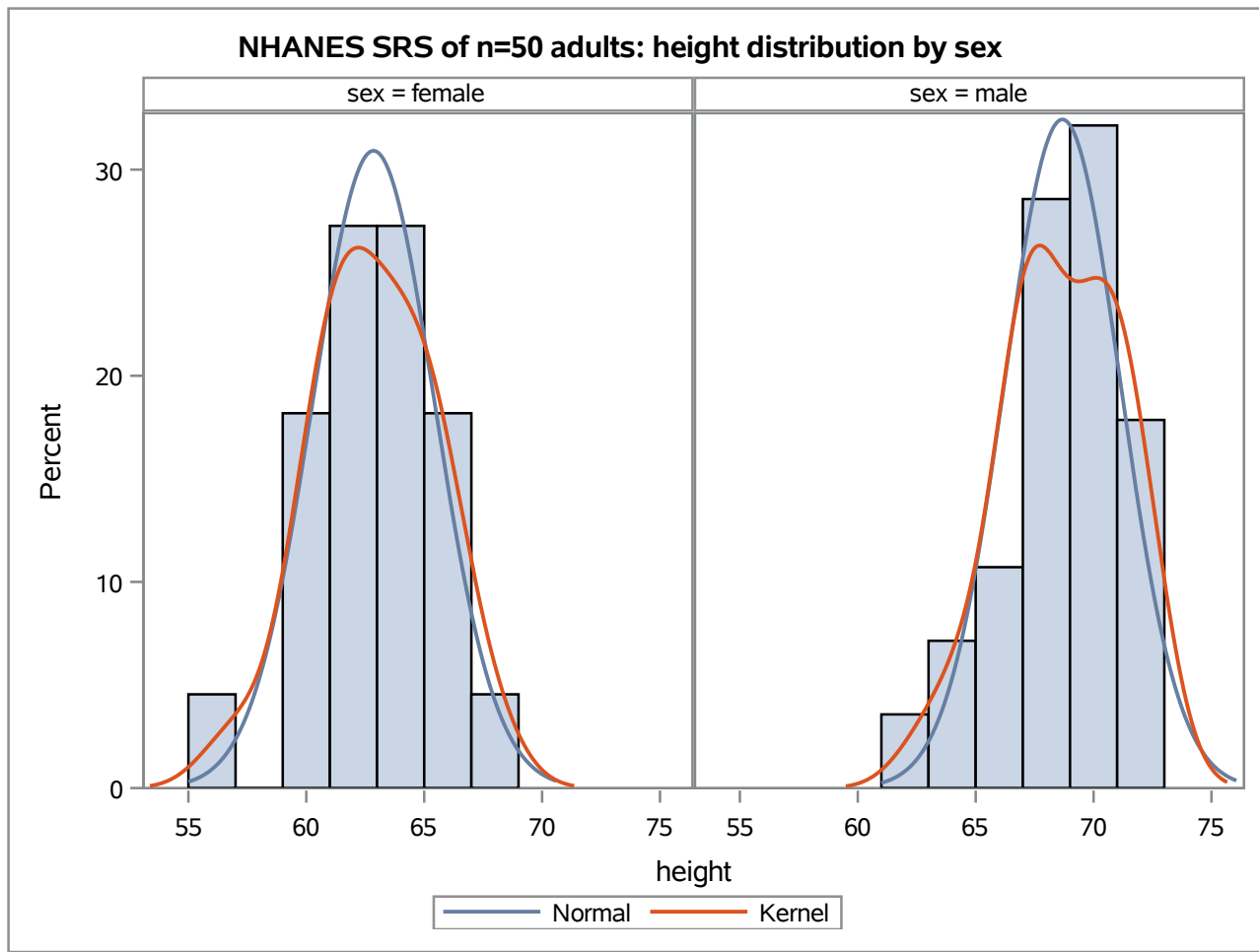
Obs	binstart	frequency	percentage
1	70	1	4.5455
2	90	1	4.5455
3	110	2	9.0909
4	130	4	18.1818
5	150	5	22.7273
6	170	6	27.2727
7	190	2	9.0909
8	210	1	4.5455

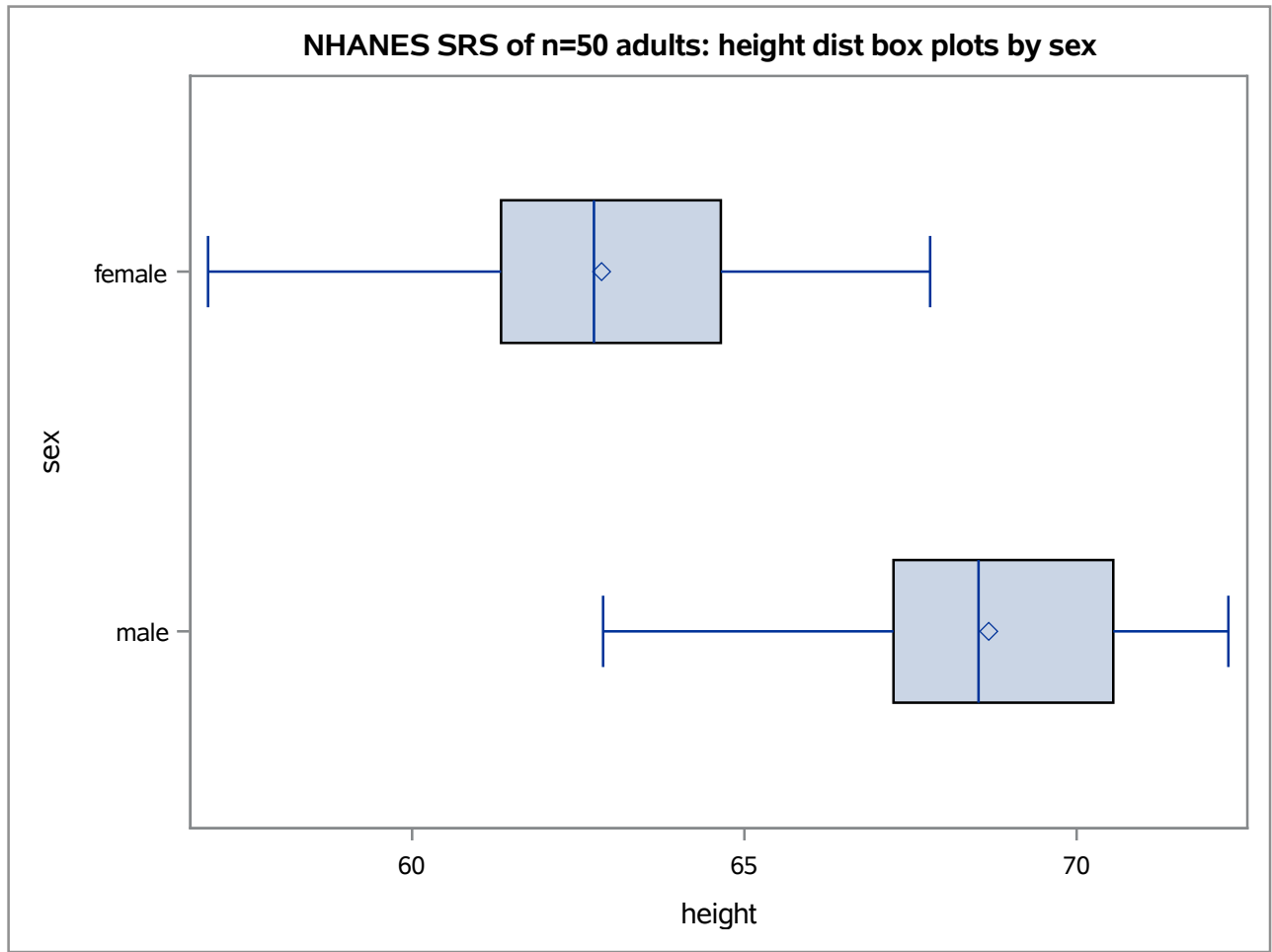
sex=male

Obs	binstart	frequency	percentage
9	110	2	7.1429
10	130	2	7.1429
11	150	6	21.4286
12	170	5	17.8571
13	190	7	25.0000
14	210	0	0.0000
15	230	2	7.1429
16	250	1	3.5714
17	270	2	7.1429
18	290	1	3.5714









NHANES SRS of n=50 adults: height distributions by sex

The UNIVARIATE Procedure
Variable: height
sex = female

Basic Statistical Measures			
Location		Variability	
Mean	62.85075	Std Deviation	2.58094
Median	62.73622	Variance	6.66127
Mode	.	Range	10.86614
		Interquartile Range	3.30709

Quantiles (Definition 5)	
Level	Quantile
100% Max	67.7953
99%	67.7953
95%	66.1811
90%	65.9055
75% Q3	64.6457
50% Median	62.7362
25% Q1	61.3386
10%	59.8031
5%	59.6850
1%	56.9291
0% Min	56.9291

Extreme Values			
Lowest		Highest	
Order	Value	Order	Value
1	56.9291	18	65.2362
2	59.6850	19	65.7087
3	59.8031	20	65.9055
4	60.4724	21	66.1811
5	60.7874	22	67.7953

NHANES SRS of n=50 adults: height distributions by sex

The UNIVARIATE Procedure
Variable: height
sex = male

Basic Statistical Measures			
Location		Variability	
Mean	68.67688	Std Deviation	2.46000
Median	68.52362	Variance	6.05160
Mode	67.36220	Range	9.40945
		Interquartile Range	3.30709

Note: The mode displayed is the smallest of 4 modes with a count of 2.

Quantiles (Definition 5)	
Level	Quantile
100% Max	72.2835
99%	72.2835
95%	72.1654
90%	72.1654
75% Q3	70.5512
50% Median	68.5236
25% Q1	67.2441
10%	64.8425
5%	64.7244
1%	62.8740
0% Min	62.8740

Extreme Values					
Lowest			Highest		
Order	Value	Freq	Order	Value	Freq
1	62.8740	1	20	70.7087	2
2	64.7244	1	21	71.2205	1
3	64.8425	1	22	71.9291	1
4	66.4567	1	23	72.1654	2
5	66.6929	1	24	72.2835	1

NHANES SRS of n=50 adults: height distributions by sex**The MEANS Procedure**

Analysis Variable : height											
sex	N Obs	N	Minimum	Lower Quartile	Median	Upper Quartile	Maximum	Range	Quartile Range	Mean	Std Dev
female	2919	2888	53.3071	61.2598	63.2480	65.0197	73.1102	19.8031	3.7598	63.1497	2.8234
male	2669	2642	57.7165	66.5748	68.5827	70.7087	79.7638	22.0472	4.1339	68.6349	3.0649

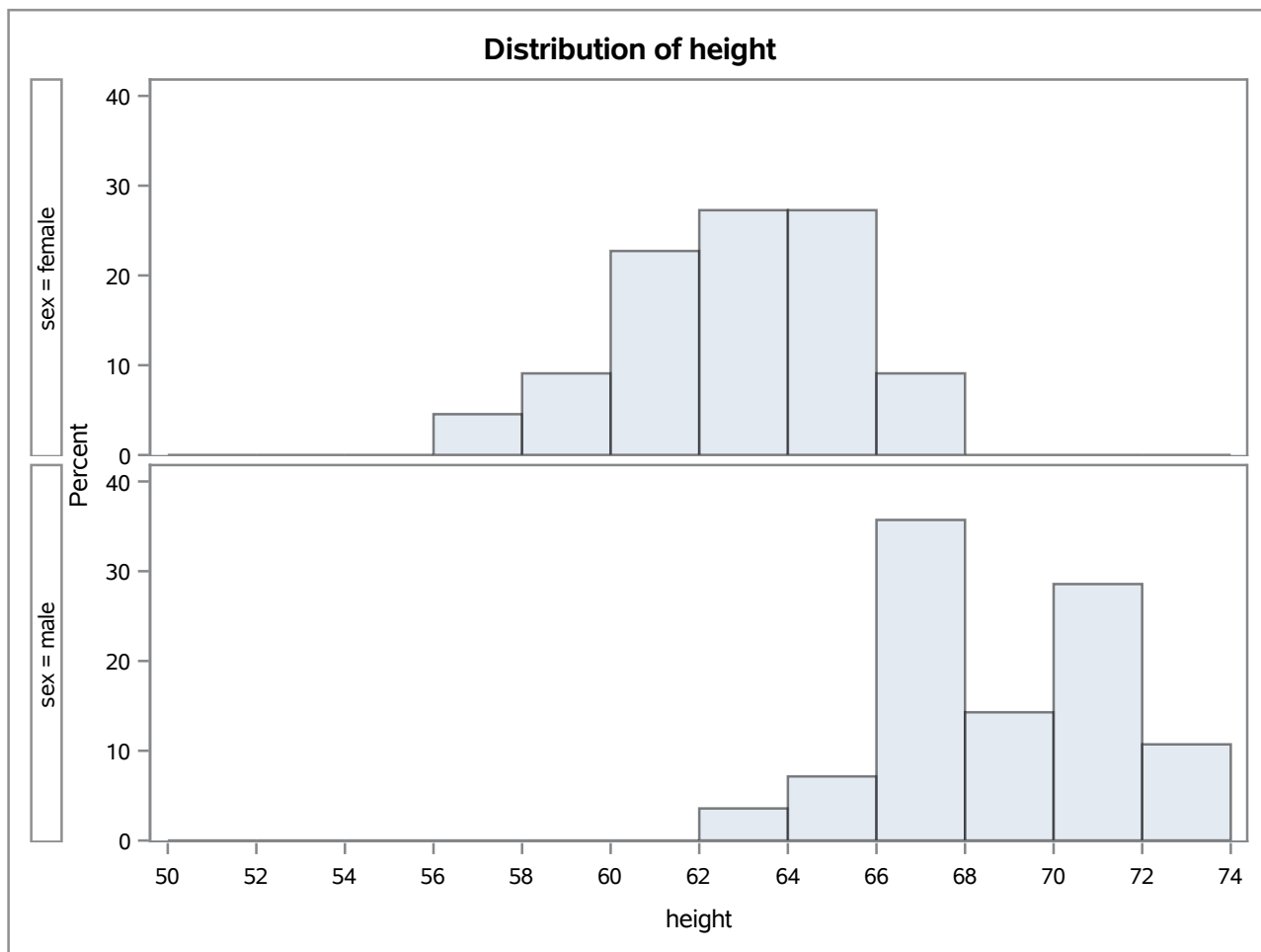
NHANES SRS of n=50 adults: height distributions by sex**The MEANS Procedure**

Analysis Variable : height														
sex	N Obs	1st Pctl	5th Pctl	10th Pctl	20th Pctl	30th Pctl	40th Pctl	50th Pctl	60th Pctl	70th Pctl	80th Pctl	90th Pctl	95th Pctl	99th Pctl
female	22	56.9291	59.6850	59.8031	60.7874	61.3780	62.0079	62.7362	63.5433	64.6063	65.2362	65.9055	66.1811	67.7953
male	28	62.8740	64.7244	64.8425	66.7323	67.3622	67.5591	68.5236	69.8819	70.3937	70.7087	72.1654	72.1654	72.2835

NHANES SRS of n=50 adults: height distributions by sex

NHANES SRS of n=50 adults: histograms and relative frequency distributions

The UNIVARIATE Procedure



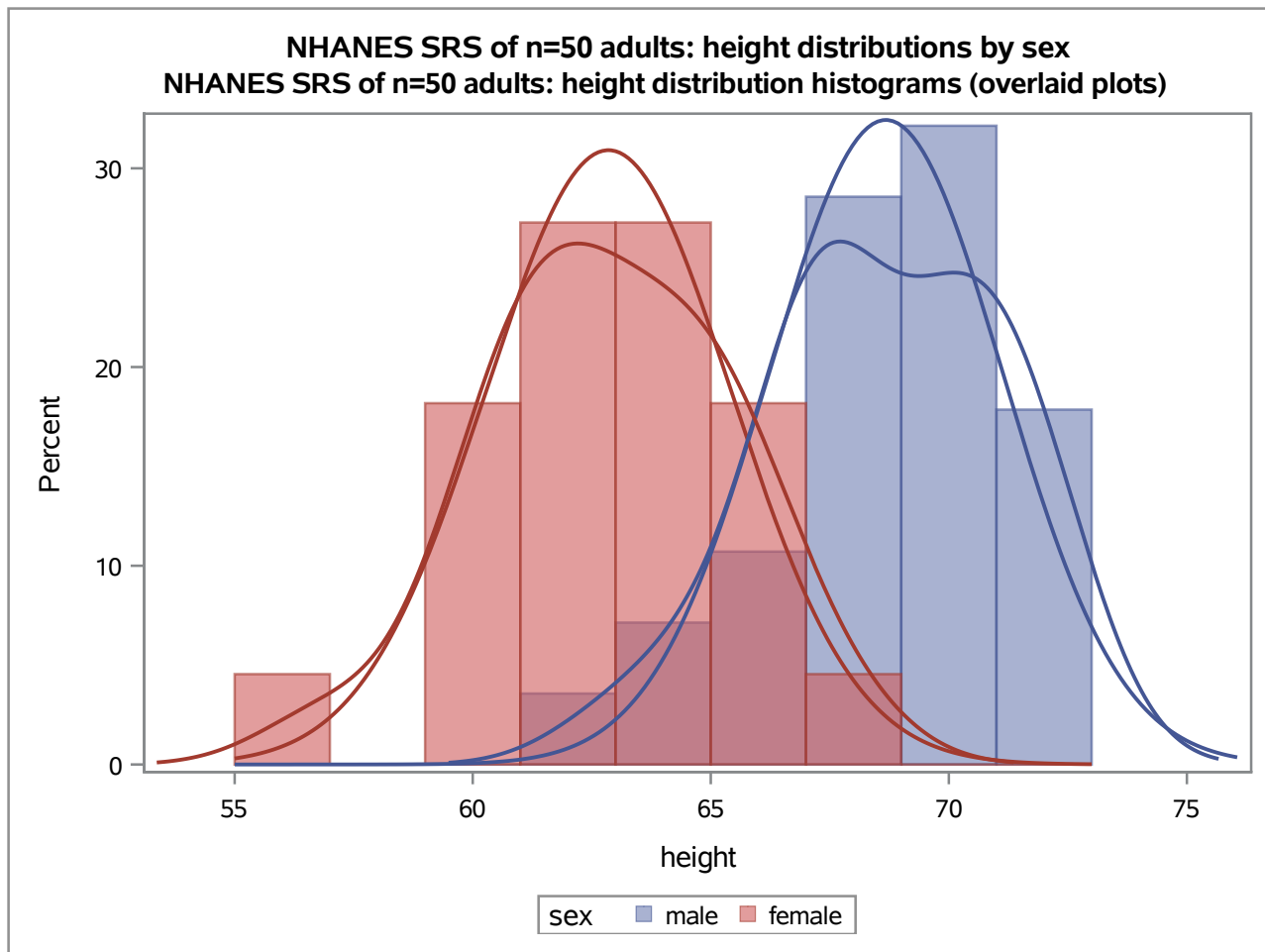
NHANES SRS of n=50 adults: height distributions by sex
NHANES SRS of n=50 adults: histograms and relative frequency distributions

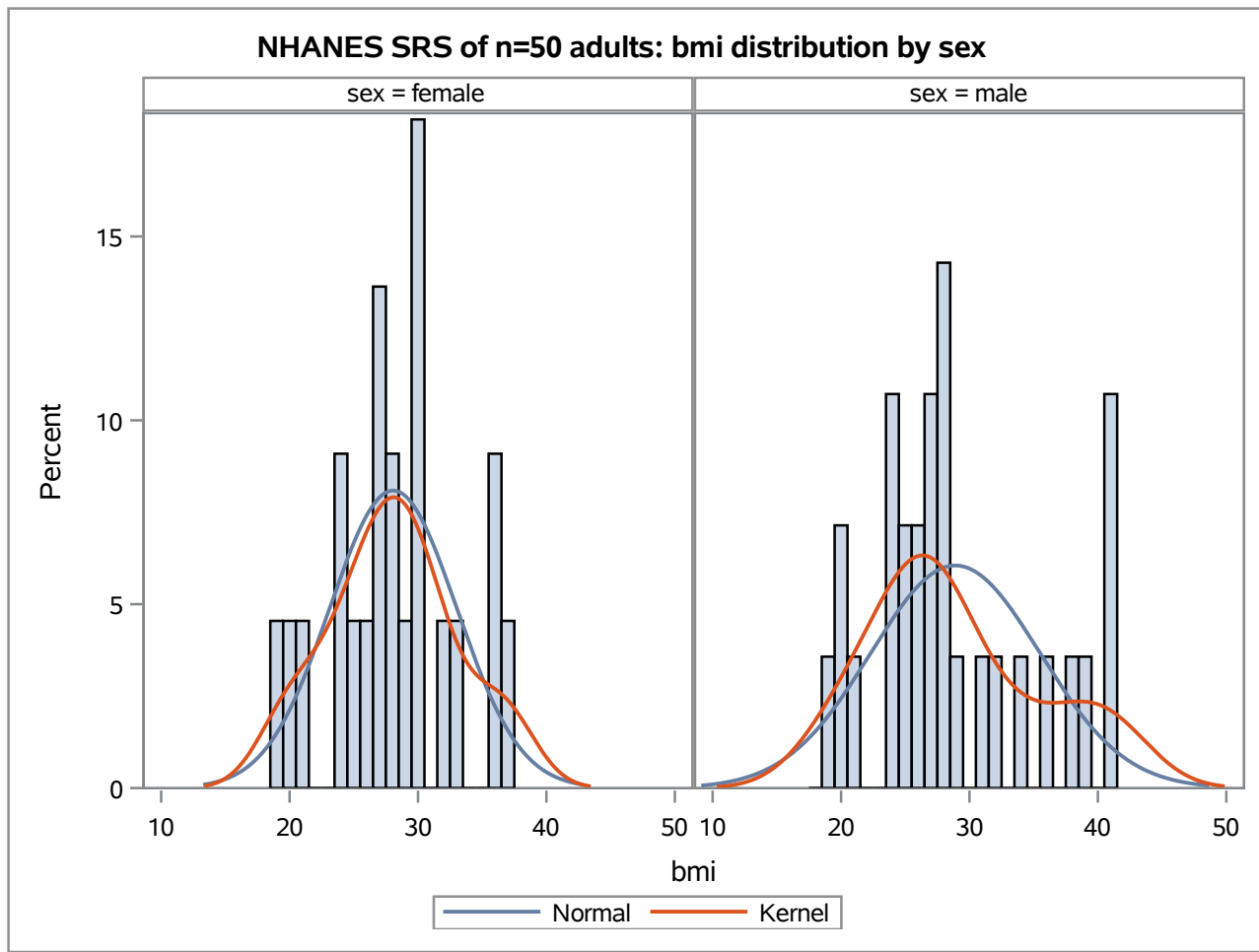
sex=female

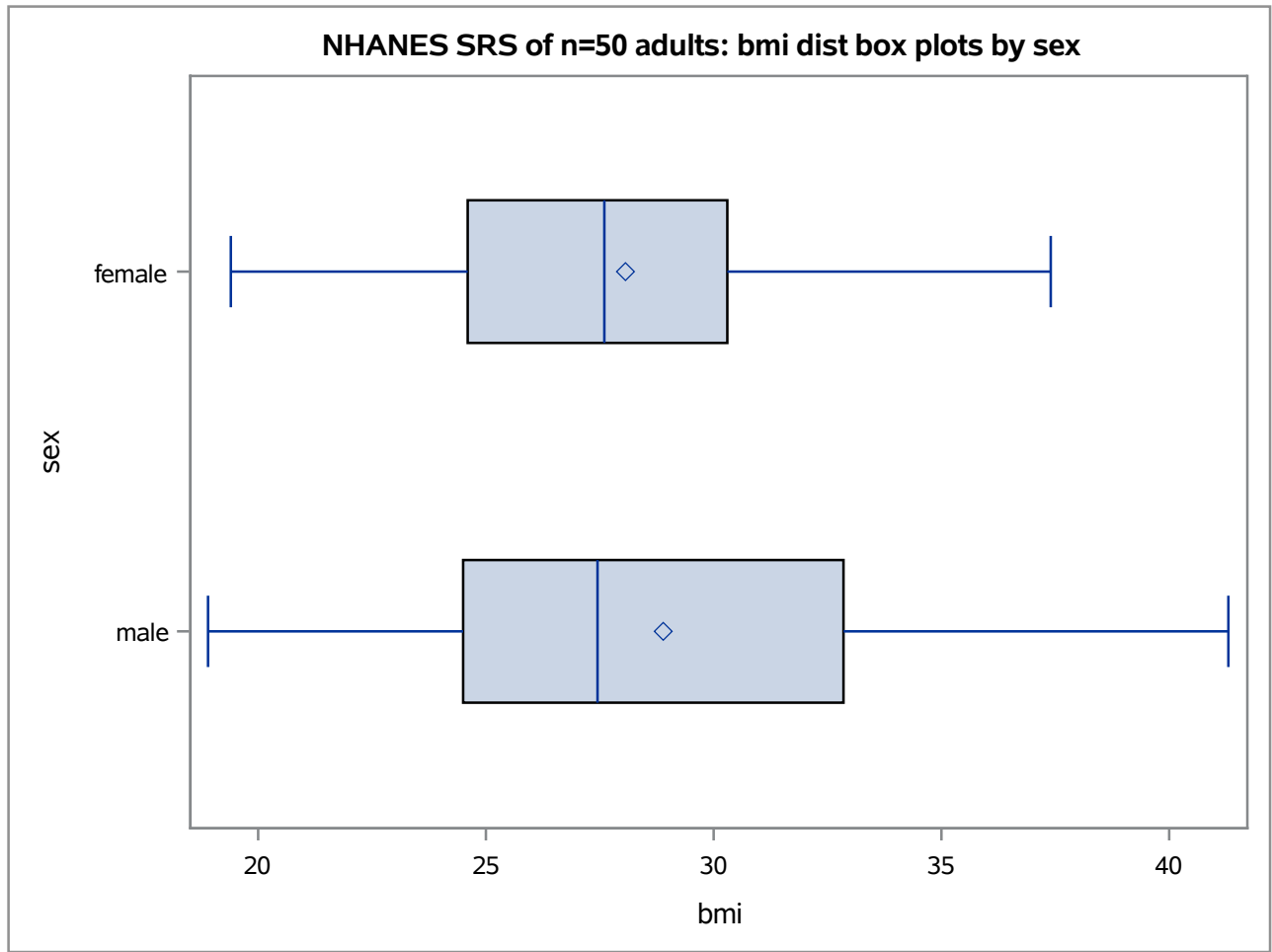
Obs	binstart	frequency	percentage
1	56	1	4.5455
2	58	2	9.0909
3	60	5	22.7273
4	62	6	27.2727
5	64	6	27.2727
6	66	2	9.0909

sex=male

Obs	binstart	frequency	percentage
7	62	1	3.5714
8	64	2	7.1429
9	66	10	35.7143
10	68	4	14.2857
11	70	8	28.5714
12	72	3	10.7143







NHANES SRS of n=50 adults: bmi distributions by sex

The UNIVARIATE Procedure
Variable: bmi
sex = female

Basic Statistical Measures			
Location		Variability	
Mean	28.06364	Std Deviation	4.93129
Median	27.60000	Variance	24.31766
Mode	27.60000	Range	18.00000
		Interquartile Range	5.70000

Note: The mode displayed is the smallest of 3 modes with a count of 2.

Quantiles (Definition 5)	
Level	Quantile
100% Max	37.4
99%	37.4
95%	36.1
90%	36.1
75% Q3	30.3
50% Median	27.6
25% Q1	24.6
10%	20.9
5%	20.1
1%	19.4
0% Min	19.4

Extreme Values					
Lowest			Highest		
Order	Value	Freq	Order	Value	Freq
1	19.4	1	15	30.3	1
2	20.1	1	16	31.5	1
3	20.9	1	17	32.5	1
4	23.8	1	18	36.1	2
5	23.9	1	19	37.4	1

NHANES SRS of n=50 adults: bmi distributions by sex

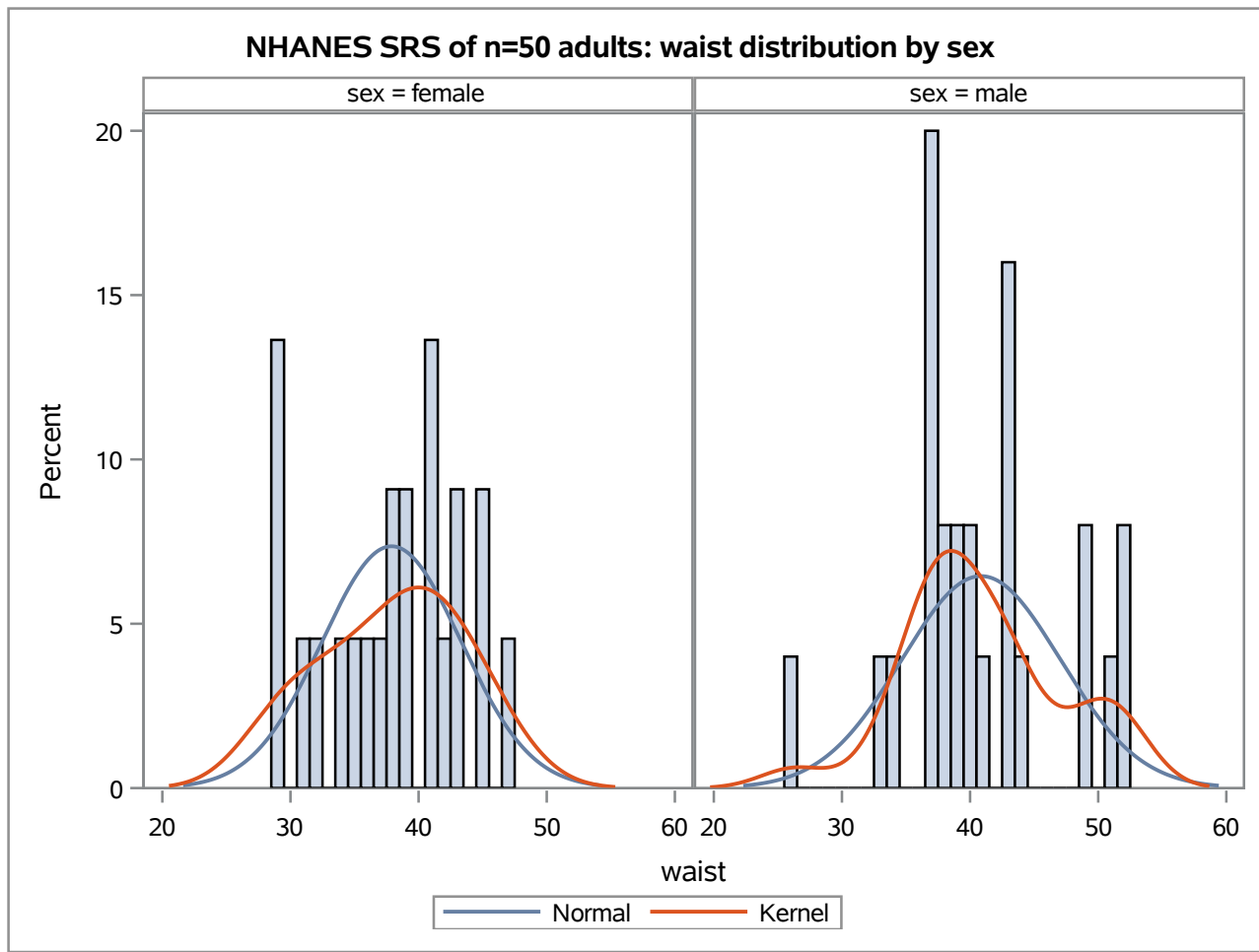
The UNIVARIATE Procedure
Variable: bmi
sex = male

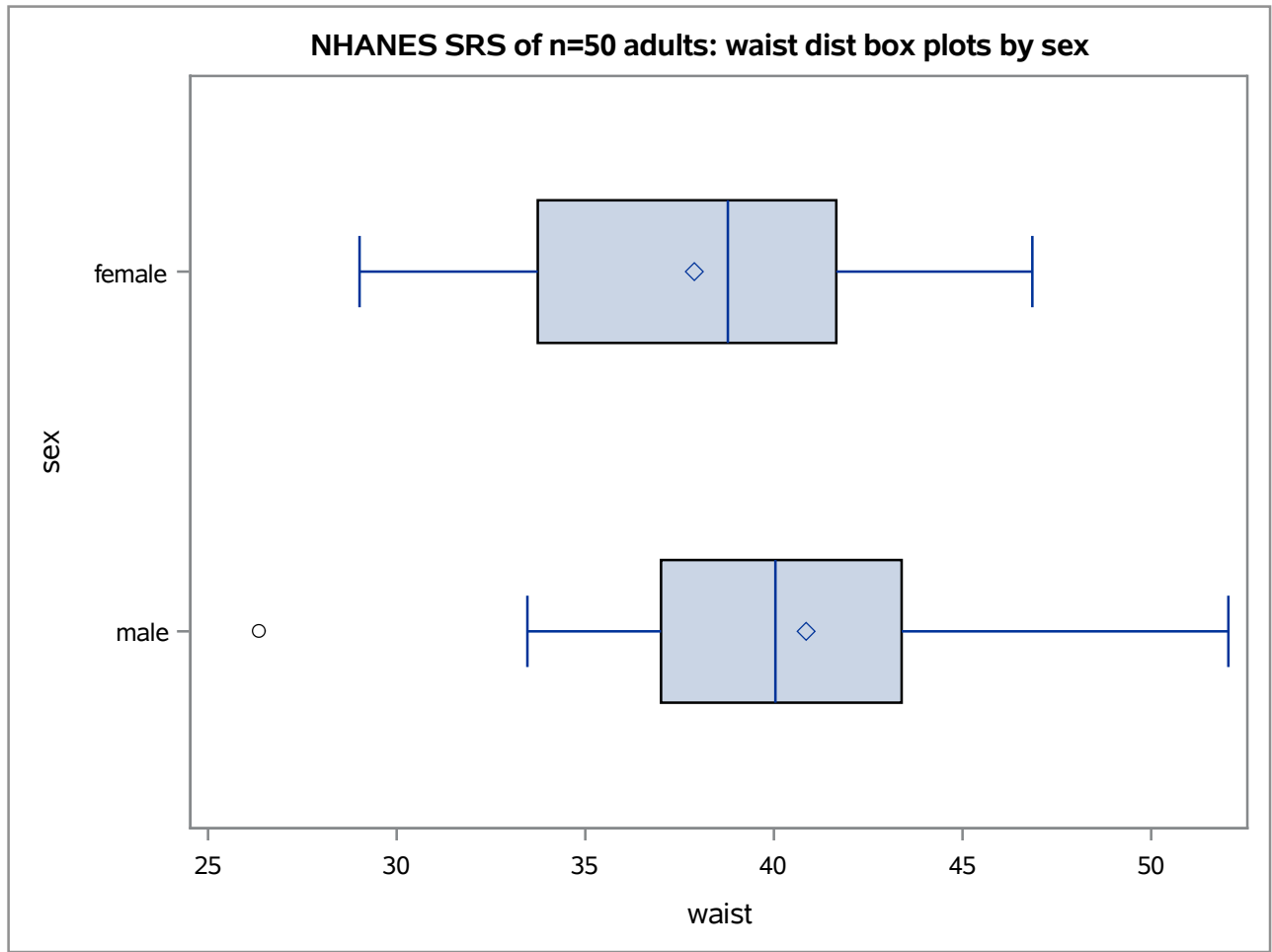
Basic Statistical Measures			
Location		Variability	
Mean	28.89286	Std Deviation	6.59208
Median	27.45000	Variance	43.45550
Mode	24.00000	Range	22.40000
		Interquartile Range	8.35000

Note: The mode displayed is the smallest of 3 modes with a count of 2.

Quantiles (Definition 5)	
Level	Quantile
100% Max	41.30
99%	41.30
95%	41.30
90%	40.90
75% Q3	32.85
50% Median	27.45
25% Q1	24.50
10%	20.30
5%	20.10
1%	18.90
0% Min	18.90

Extreme Values					
Lowest			Highest		
Order	Value	Freq	Order	Value	Freq
1	18.9	1	21	35.8	1
2	20.1	1	22	38.2	1
3	20.3	1	23	39.0	1
4	21.1	1	24	40.9	1
5	23.9	1	25	41.3	2





NHANES SRS of n=50 adults: waist distributions by sex

The UNIVARIATE Procedure
Variable: waist
sex = female

Basic Statistical Measures			
Location		Variability	
Mean	37.89012	Std Deviation	5.42247
Median	38.77953	Variance	29.40321
Mode	.	Range	17.83465
		Interquartile Range	7.91339

Quantiles (Definition 5)	
Level	Quantile
100% Max	46.8504
99%	46.8504
95%	45.3937
90%	44.7244
75% Q3	41.6535
50% Median	38.7795
25% Q1	33.7402
10%	29.1339
5%	29.0945
1%	29.0157
0% Min	29.0157

Extreme Values			
Lowest		Highest	
Order	Value	Order	Value
1	29.0157	18	42.5984
2	29.0945	19	42.9134
3	29.1339	20	44.7244
4	31.2598	21	45.3937
5	32.2835	22	46.8504

NHANES SRS of n=50 adults: waist distributions by sex

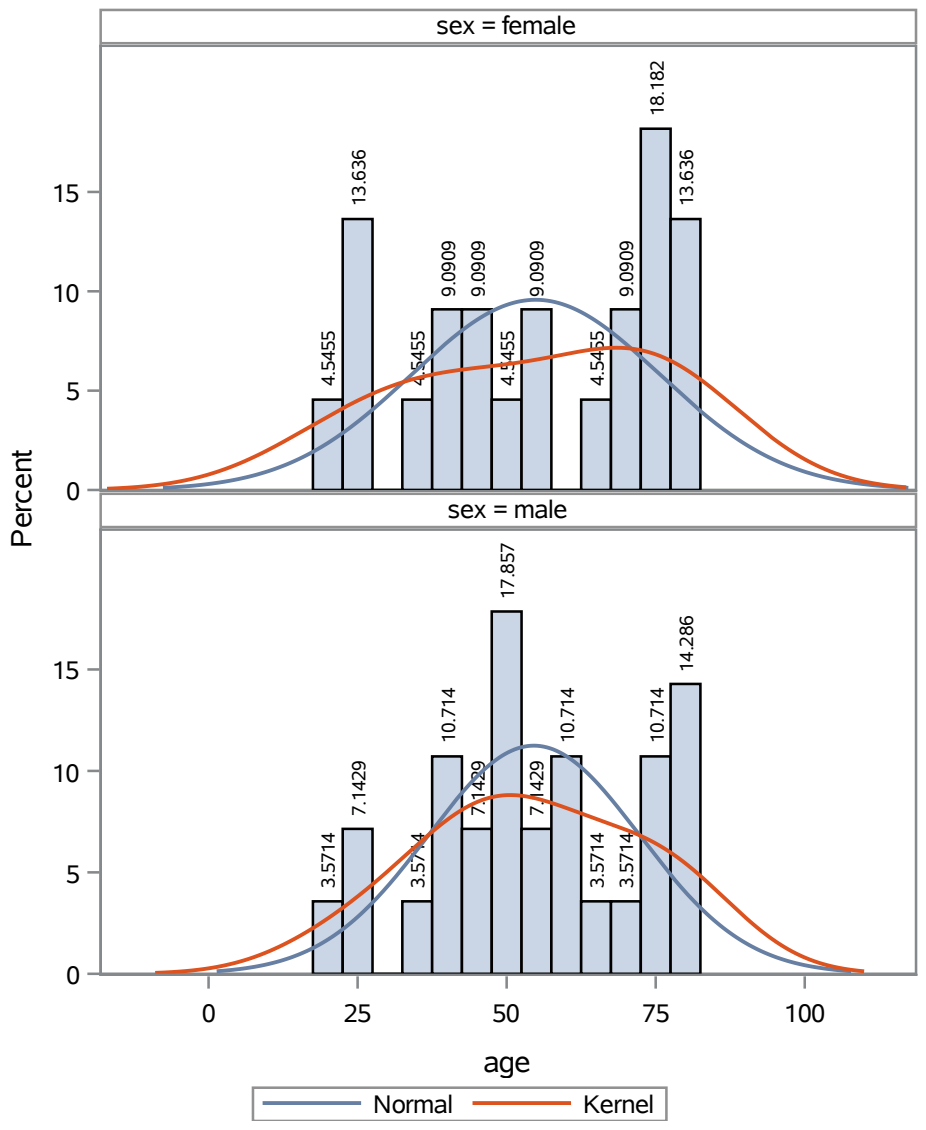
The UNIVARIATE Procedure
 Variable: waist
 sex = male

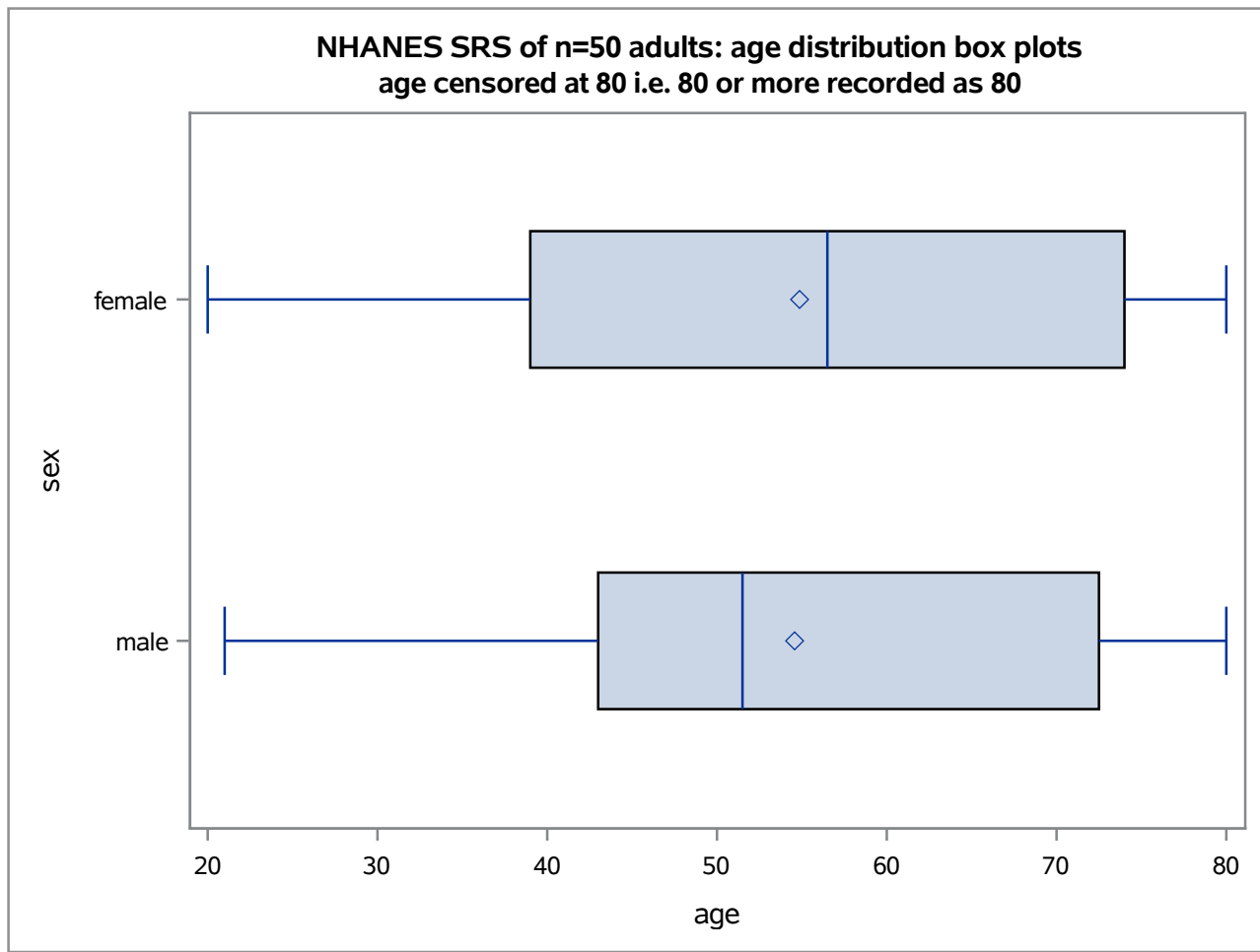
Basic Statistical Measures			
Location		Variability	
Mean	40.85354	Std Deviation	6.18579
Median	40.03937	Variance	38.26399
Mode	.	Range	25.70866
		Interquartile Range	6.37795

Quantiles (Definition 5)	
Level	Quantile
100% Max	52.0472
99%	52.0472
95%	51.7323
90%	51.0630
75% Q3	43.3858
50% Median	40.0394
25% Q1	37.0079
10%	34.2520
5%	33.4646
1%	26.3386
0% Min	26.3386

Extreme Values			
Lowest		Highest	
Order	Value	Order	Value
1	26.3386	21	48.8189
2	33.4646	22	48.8976
3	34.2520	23	51.0630
4	36.5354	24	51.7323
5	36.7717	25	52.0472

NHANES SRS of n=50 adults: age distribution by sex -- 5 year binwidth
age censored at 80 i.e. 80 or more recorded as 80





**NHANES SRS of n=50 adults: age distribution by sex
age censored at 80 i.e. 80 or more recorded as 80**

**The UNIVARIATE Procedure
Variable: age
sex = female**

Basic Statistical Measures			
Location		Variability	
Mean	54.86364	Std Deviation	20.84020
Median	56.50000	Variance	434.31385
Mode	80.00000	Range	60.00000
		Interquartile Range	35.00000

Quantiles (Definition 5)	
Level	Quantile
100% Max	80.0
99%	80.0
95%	80.0
90%	80.0
75% Q3	74.0
50% Median	56.5
25% Q1	39.0
10%	25.0
5%	24.0
1%	20.0
0% Min	20.0

Extreme Values					
Lowest			Highest		
Order	Value	Freq	Order	Value	Freq
1	20	1	15	72	1
2	24	1	16	73	1
3	25	1	17	74	2
4	26	1	18	76	1
5	35	1	19	80	3

NHANES SRS of n=50 adults: age distribution by sex
age censored at 80 i.e. 80 or more recorded as 80

The UNIVARIATE Procedure
 Variable: age
 sex = male

Basic Statistical Measures			
Location		Variability	
Mean	54.57143	Std Deviation	17.73974
Median	51.50000	Variance	314.69841
Mode	48.00000	Range	59.00000
		Interquartile Range	29.50000

Quantiles (Definition 5)	
Level	Quantile
100% Max	80.0
99%	80.0
95%	80.0
90%	80.0
75% Q3	72.5
50% Median	51.5
25% Q1	43.0
10%	27.0
5%	24.0
1%	21.0
0% Min	21.0

Extreme Values					
Lowest			Highest		
Order	Value	Freq	Order	Value	Freq
1	21	1	19	73	1
2	24	1	20	75	1
3	27	1	21	77	1
4	34	1	22	78	1
5	39	1	23	80	3

NHANES SRS of n=50 adults: sex distribution

The FREQ Procedure

sex	Frequency	Percent	Cumulative Frequency	Cumulative Percent
female	22	44.00	22	44.00
male	28	56.00	50	100.00

